

DT-980Y Thermal Imager Datasheet

Rapid Screening Thermal Imager for Surface Temperature

DT-980Y



The only Thermal Imager especially calibrated for Human Body Temperature

Range accuracy for human body:

0.5 deg F (89.6 to 107.6 deg F)

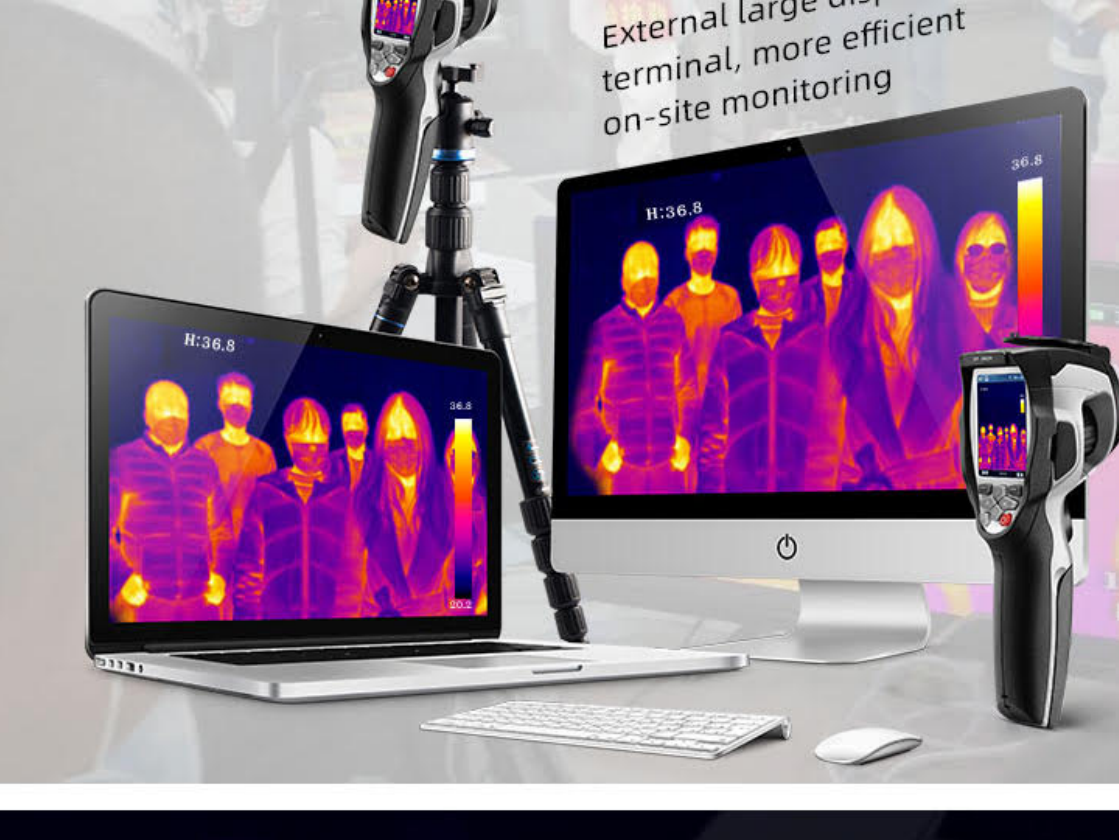
< 20ms fast thermal imaging temperature measurement

Quick large-scale screening temperature measurement

Non-contact testing makes quarantine personnel safer

Based on the detection principle of infrared thermal imaging, quarantine personnel can be physically separated from the quarantine object, which can improve the detection efficiency and protect the safety of quarantine personnel.

External large display terminal, more efficient on-site monitoring

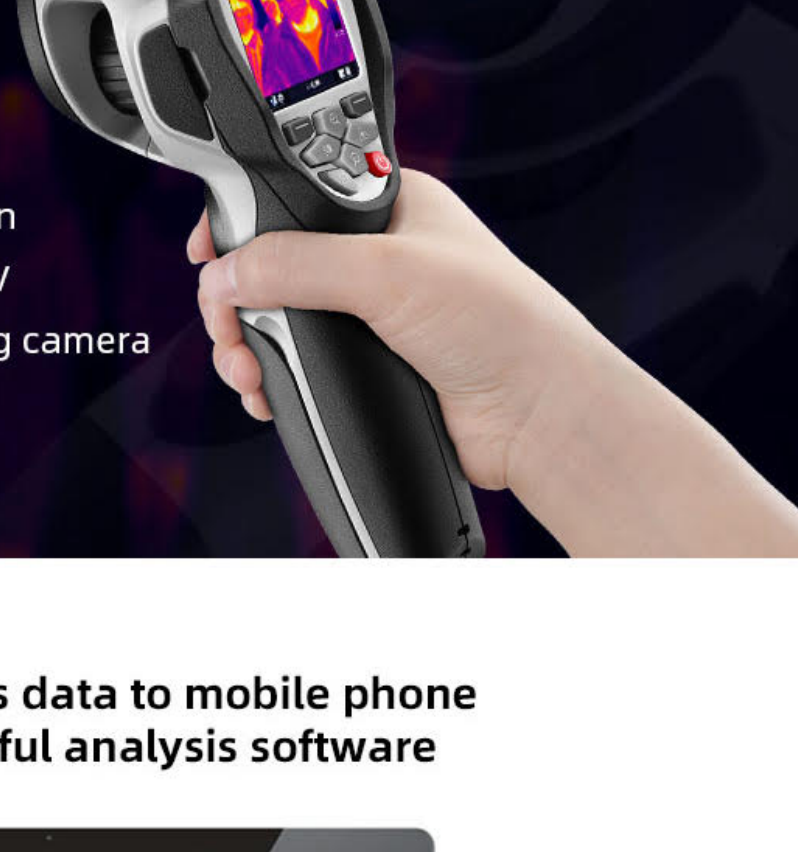


Especially calibrated for human body temperature

Temperature Range Accuracy: 0.5 deg.



- 2.8" HD screen
- 80x80 resolution
- 5 megapixel visible
- 50Hz high frame rate
- 32x continuous digital zoom
- 5 megapixel visible light fusion
- Smaller spatial resolution IFOV
- Patented AUF thermal imaging camera



OTG line transmits data to mobile phone

Free and powerful analysis software



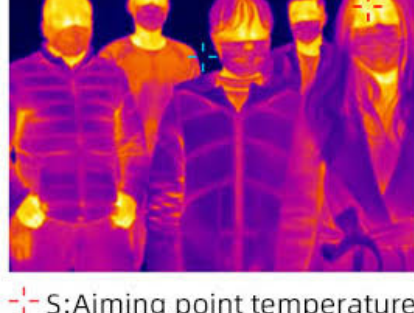
High temperature color alarm

High and low temperature warning function, you can set the temperature to issue a warning



High and low temperature automatic tracking

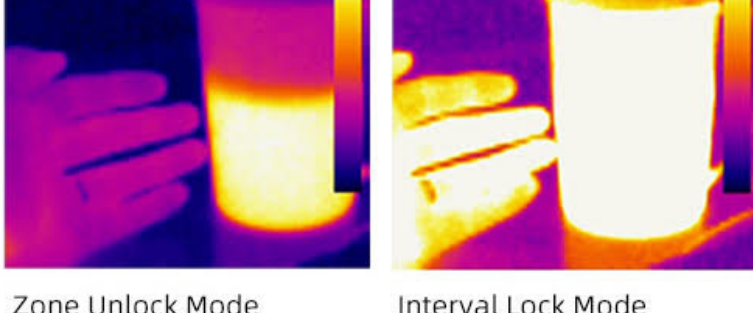
Automatically track the highest / lowest temperature, easiest find the abnormal temperature in the detection area



⊕ S: Aiming point temperature
⊕ H: Highest temperature

Surface temperature screening mode

When measuring in infrared, you can lock the high and low temperature according to your needs. DT-980Y will automatically shield the temperature outside this area.



Zone Unlock Mode

Interval Lock Mode

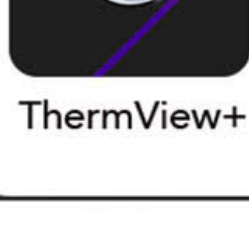
Function button

Laser pointer

Camera

LED lights

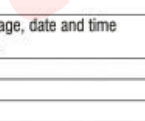
Infrared lens



ThermView+

"Thermview + "for Android: Please search for 'Thermview +' keywords in the Google play app market, download and run.

"Thermview + "for iOS: Please search for 'Thermview +' keywords in the Apple store, download and run.



Specifications

Imaging and optical data	Field of View (FOV) / Minimum Focus Distance	17°x 17° / 0.5m (8mm) General
		21°x 21° (7.5mm) Wide-angle type
		8°x 8° (19mm) Long focal length type
		1.3°(9mm) General
		4.53mrad (7.5mm) Wide-angle type
		1.79mrad (19mm) Long focal length type
Thermal Sensitivity/NETD		< 0.1°C @ 30°C (86°F) / 100 mK
Image Frequency		50Hz
Focus Mode		Manual
Zoom		1-32x continuous, digital zoom
Focal Length		8mm, Optional 7.5mm / 19mm
Focal Plane Array (FPA) / Spectral Range		Uncooled microbolometer / 8-14 μm
IR Resolution		80 × 80 pixels
Image presentation		2.8 in. LCD, 240 × 320 pixels
Display		IR image, Visual image, Image Fusion
Image Modes		IRON, Rainbow, Grey, Grey Inverted
Color Palettes		
Measurement		
Object Temperature Range		-20°C to 150°C (4°F to 302°F)
		0°C to 350°C (32°F to 662°F) High temperature model
		±2°C (±3.6°F) or ±2% of reading (Environment temperature 10°C to 35°C, object temperature > 0°C)
Accuracy		
Measurement Analysis		Center Spot
		Auto hot or cold markers
Automatic Hot / Cold Detection		Variable from 0.01 to 1.0
Emissivity Correction		Emissivity, Reflected temperature
Measurement Corrections		
Storage of Videos		8GB/bytes Micro SD card
		> 90 minutes
Storage Media		IR/visual images; simultaneous storage of IR and visual images
Video Storage Mode		

Storage of Images

Image Storage Format	Standard JPEG, including measurement data, on memory card
	> 6000 pictures
Image Storage Mode	IR/visual images; simultaneous storage of IR and visual images
Set-up	
Laser	< class2
Set-up Commands	Local adaptation of units, language, date and time formats, information of camera multilingual
Languages	5 Megapixels
Digital Camera	Built-in Digital Camera
	Built-in Digital Lens Data
Data Communication Interfaces	FOV 59°
USB	Data transform between camera and PC
	Live video between camera and PC
Video Out	HDMI
Power system	
Battery	Li-ion battery, 4 hours operating time
Input Voltage	DC 5V
Charging System	In camera (AC adapter)
Power Management	Automatic shutdown
Environmental Data	
Operating Temperature Range	-15°C to +50°C (5°F to +122°F)
Storage Temperature Range	-40°C to +70°C (-40°F to +158°F)
Humidity (Operating and Storage)	10%~90%
Drop Test	2m
Bump	25g(IEC60068-2-29)
Vibration	2g(IEC60068-2-6)
Physical Data	
Camera Weight, incl. Battery	< 500g
Camera Size (L × W × H)	224x7x96